

## INSTALLATION MANUAL FOR VINYL TILE - Loose Lay Format, 5mm

LSI recommends the use of Loose Lay over raised access flooring panels or where temporary installations are required. Tiles can be easily moved to allow access underneath and/or removed after temporary use. This format is also recommended for use when marrying with carpet tile, and over wood, concrete, metal and other suitable sub-straights.

Loose Lay comes with a textured backing for grip and can be laid right in place on most surfaces. In most cases, Loose Lay will be installed with a pressure sensitive adhesive. This will prevent movement when a rolling load is applied.

LSI does not recommend the use of Loose Lay over under floor heating systems.

### 1. COMMENT

The manufacturer instructs that installation be made in accordance with the installation methods for vinyl floor tile as established in the ASTM F710-11 standard for subfloor preparation. It is also required that appropriate adhesives be used and that maintenance be carried out using the detailed information found in the Maintenance Guide.

Please note that the designs are deliberately not centralized or registered to enhance the aesthetic effect of the flooring.

#### 1.1 SELECT

It is essential that the correct flooring be specified for a particular area bearing in mind traffic (both foot and wheeled), acoustic restriction, electrical, and anti-slip requirements. If you have any questions, please contact the LSI Technical Department at 800.449.3916.

#### 1.2 PROJECT PLANNING

The following guidelines should be noted to ensure accurate documentation prior to the commencement of work:

- a. Directional drawing if appropriate
- b. Detail of subfloor construction
- c. Information on pattern, border and/or coving requirements
- d. Tests for moisture and electrical resistance must be completed and approved
- e. Tests for screed strength and leveling must be completed and approved
- f. Unacceptable standard of workmanship must be stated
- g. Removal of waste product, off cuts, adhesives, etc. must be clearly documented

### 2. SUBFLOOR PREPARATION

#### 2.1 TEST FOR MOISTURE

Under no circumstances should LSI Loose Lay be adhered to a subfloor that contains moisture readings in excess of 75% relative humidity or 5 pounds moisture per 1000 sq.ft. Similarly, the product should not be laid on subfloors that are susceptible to rising damp and/or hydrostatic pressure. Test for vapor emissions using ASTM F1869 Anhydrous Calcium Chloride test, as well as ASTM F2170 for relative humidity testing.

Alkalinity levels must also be tested with the acceptable range being 7.0 to 10.0pH. Test for Alkalinity or PH level using ASTM F710.

The extensive warranty issued by LSI will be nullified if these instructions are ignored.

TEST ALL INSTALLATIONS! If you have any questions, please call the LSI Technical Department at 800.449.3916.

**2.2 UNDERLAYMENTS (FLOOR SMOOTHING)**

Cement based floor patches should be the only thing used to level the subfloor for tile installation. Floor must be reasonably smooth or tile will telegraph subfloor imperfections. Call the LSI Technical Department for your specific job site patching recommendations. In the case of Jypcrete or any similar type product, contact LSI Technical Department for further installation instructions.

**2.3 UNDERLAY TYPE**

Any and/or all approved commercial timber based flooring underlay of 1/4" or 5mm is acceptable providing it is fastened to the subfloor as per manufacturer's specifications. All joints should be sanded and filled. For any other subfloors contact LSI Technical Department.

**2.4 RAISED ACCESS FLOORING**

Make sure that the raised access flooring panels are level, smooth, free of defects and are clean. When installing on raised access flooring the following conditions for installation must be met;

- panel edges are not to exceed 0.75mm
- gaps not to exceed 1mm
- adjacent panel height not to exceed 0.75mm
- seams are to be staggered so as not to lie directly in line with the raised access flooring seams
- if heavy rolling loads are to be a frequent occurrence, pressure sensitive adhesive is recommended



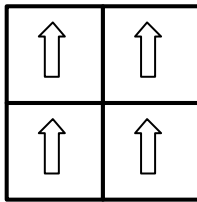
**3. PROCESS OF INSTALLATION**

On receipt of the product ensure both the correctness of quantity and color as outlined in the original order. Ensure no damage has occurred during transit. Store the tiles perfectly flat. Store tiles and adhesive in a covered area at a minimum temperature of 55° - 81° F (13° - 27° C). Tiles should not be installed until all other work, which could cause damage to the finished flooring, has been completed.

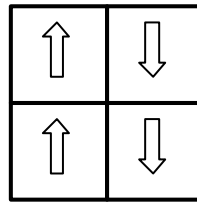
The tiles should be allowed to condition at room temperature or 72° F (22° C) and a relative humidity of 50% for at least 48 hours before installation. The temperature should also be maintained during and after the laying of tiles.

### 3.1 LAYOUT

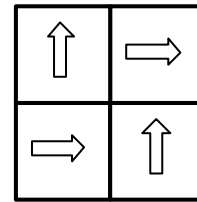
Shuffle and alternate tiles and boxes. Do not attempt to pattern match. The designs are deliberately not centralized or registered to enhance the aesthetic effect of the flooring. It is best to randomly lay the patterns to achieve a more natural look. Loose Lay squares can be installed in any direction as shown following:



All tiles same direction

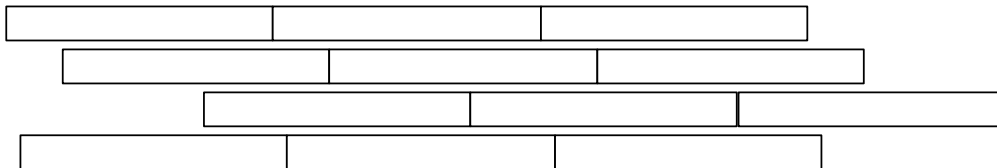


Columns



Checker Board

Wood strips or plank type tiles are to be installed in a random pattern as below. Make sure to stagger the seams so they will not lie directly in line with the raised access flooring seams.



### 3.2 MEASURE AND MARKOUT

The area to be laid should be measured in both directions and to within alcoves, if any. Introduce a chalk centre line from one side to the other ensuring that it is square to the wall and doorways. From the centre line loose lay tiles to ascertain whether small strips will have to be laid at the room perimeter. If this proves to be the case, adjust the centre line in either direction but ensure that it remains parallel with the original. In doing so, it will necessitate only a small cut off the perimeter. Introduce a further chalk line to bisect the former at the centre. Loose lay tiles away from the second line as before and adjust accordingly.

### 3.3 ADHESIVE

It may be necessary to introduce an adhesive depending on site conditions and/or rolling loads. Loose Lay can be permanently fastened to the subfloor with LSI300 adhesive or it may be adhered with releasable adhesive, MAPEI ECO 810. The spread of the adhesive remains dependent upon site conditions at the time of installation. Humidity, airflow, and temperature all affect the amount of open time required. All manufacturer's detailed open time tolerances and instructions should be followed to the letter.

### 3.4 ADHESION, ON YOUR MARKS

Once the adhesive has become tacky, place the first tile in the corner where the first centre line bisects the second. Press the tile down in the centre working outward until all the air is expelled. Place the next tile in position, alternating direction, continuing along the centre line presenting a two tile width, one either side of the aforementioned line. Tiles should be butted cleanly, evenly and snugly against the adjacent tile. Remove excess adhesive during work in progress and roll in both directions with a 100lb roller. Repeat procedure until main field is complete.

#### 4. PRECAUTIONS AFTER INSTALLATION

The adhesive must be allowed to dry for at least 48 hours before the floor is exposed to heavy traffic, water or cleaning materials. Light foot traffic is acceptable immediately. Since many factors enter into it, the cure time can extend to a week or more. Of all the factors that can inhibit the adhesive from curing, moisture has the greatest effect.

Never use strong acid or alkaline cleaners or waxes. This will cause yellowing and eventually will require more maintenance. Use caution when using a high speed floor polisher or propane powered high revolution burnisher. These will cause damage to any high spots in the installation. After at least 48 hours all installations should be coated with a floor finish. See LSI Vinyl Floor Care Recommendations package from Diversey and Taski. As 85% of all dirt entering a building is via foot traffic, LSI recommends the use of a barrier mat system to a minimum of 6'6" or 2 meters within the building entrance.

Should you have any questions not answered in this manual, please call between the hours of 9:00am - 5:00pm EST:

**LSI Technical Department at [1.800.449.3916](tel:1.800.449.3916)**